

DECK-SIL™ System 1700 Series



ADVANCED
CHEMICAL
TECHNOLOGIES, Inc.
"Protecting the World's Infrastructure"

Dual Layer Concrete Deck Sealing & Refurbishment

Patent Pending

Penetration Results for ACT's Deck-Sil™ 1700 Series



$$\frac{1.74}{3} = 0.58$$
$$\frac{4.25}{\left(\frac{4.91}{3}\right)} = 0.83$$

Average Penetration .83 inches as
calculated by the Oklahoma DOT.

Core Sample Pictures Provided by the Oklahoma
Department of Transportation, 09/2014

DECK-SIL™ System 1700 Series

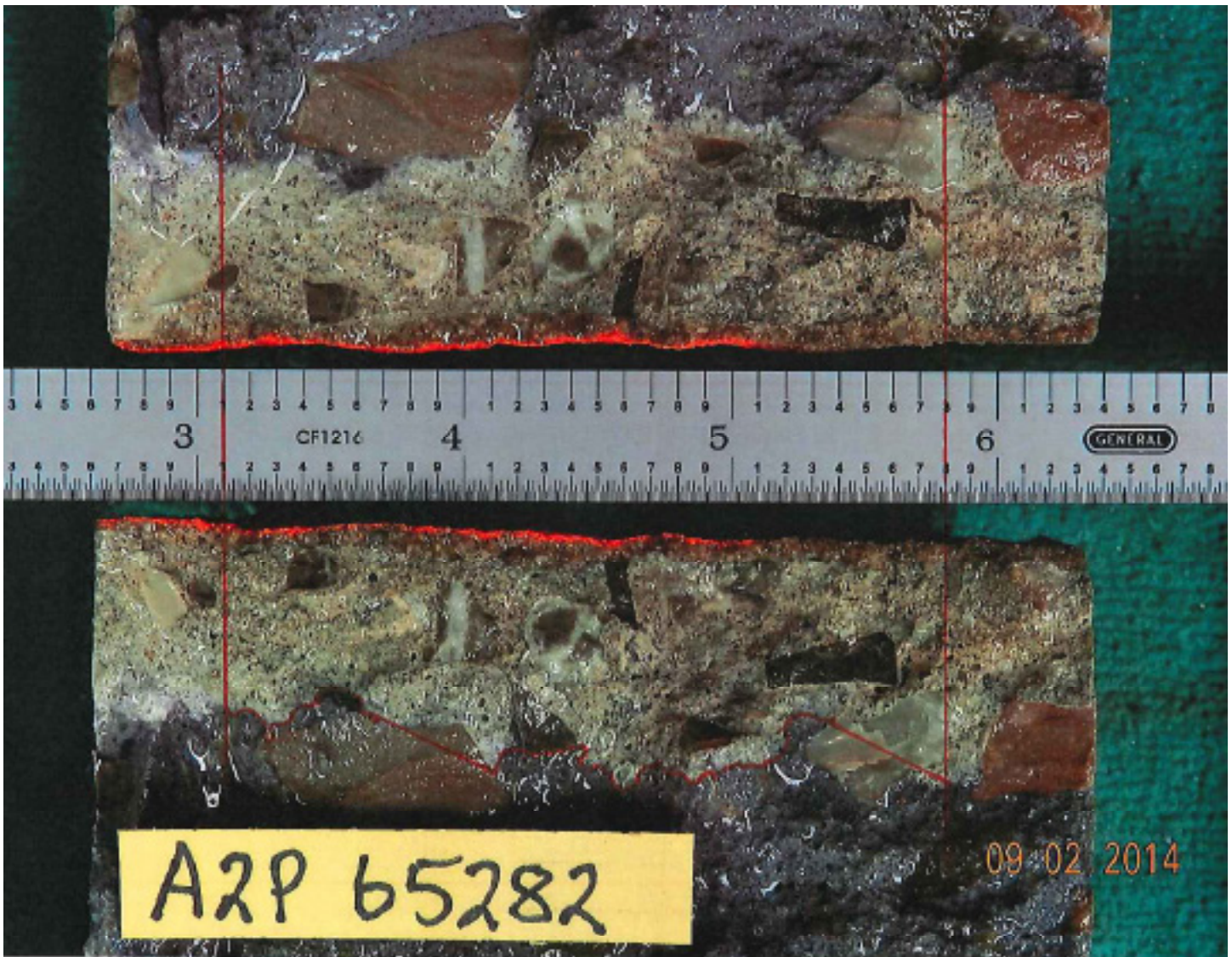


ADVANCED
CHEMICAL
TECHNOLOGIES, Inc.
"Protecting the World's Infrastructure"

Dual Layer Concrete Deck Sealing & Refurbishment

Patent Pending

Penetration Results for ACT's Deck-Sil™ 1700 Series



$$\frac{16.50}{3} = 5.50$$
$$4.41 \left(\frac{4.91}{3} \right) = 0.76$$

Average Penetration .76 inches as
calculated by the Oklahoma DOT.

Core Sample Pictures Provided by the Oklahoma
Department of Transportation, 09/2014

DECK-SIL™ System 1700 Series

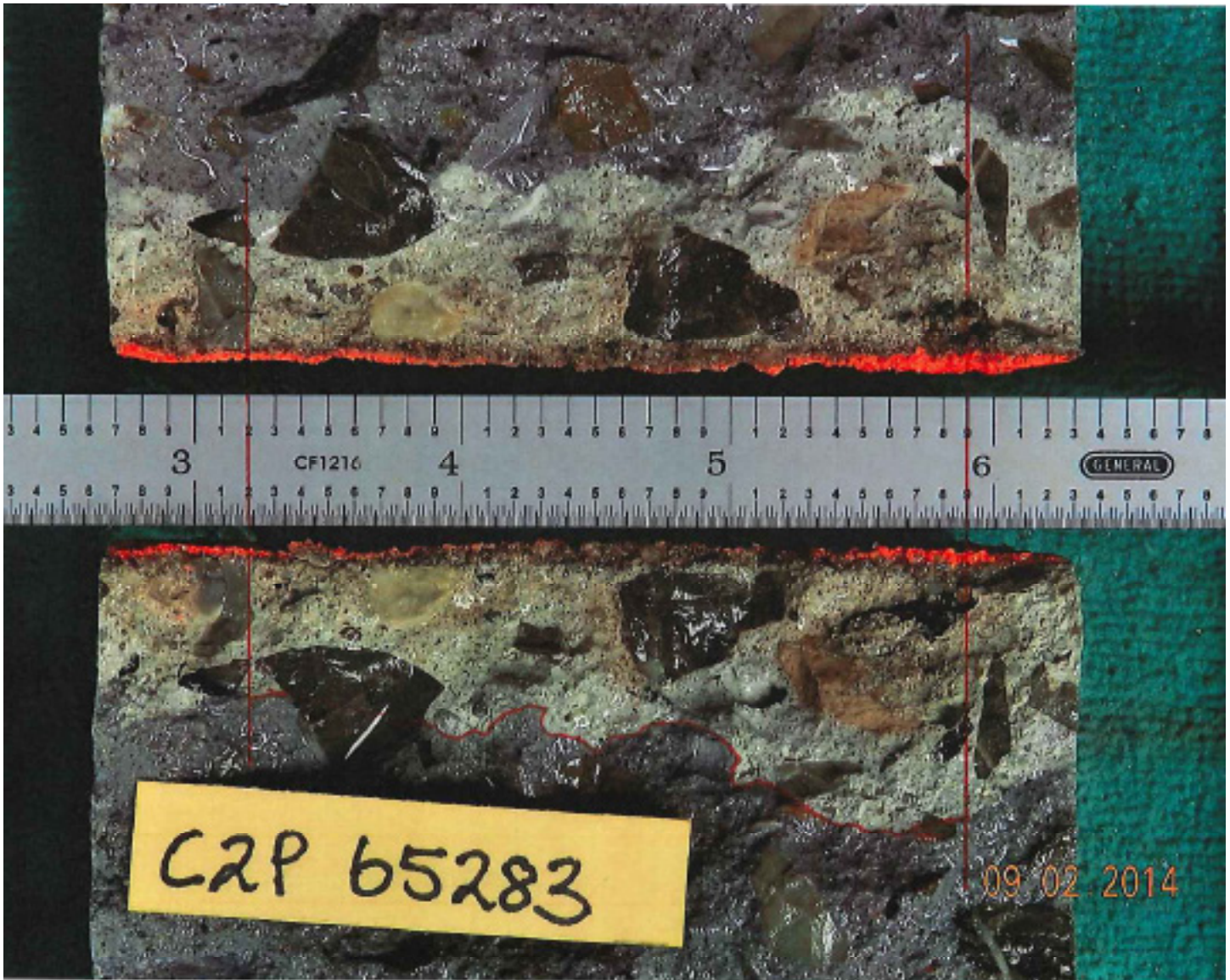


ADVANCED
CHEMICAL
TECHNOLOGIES, Inc.
"Protecting the World's Infrastructure"

Dual Layer Concrete Deck Sealing & Refurbishment

Patent Pending

Penetration Results for ACT's Deck-Sil™ 1700 Series



$$\frac{16.05}{3} = 5.35$$
$$\frac{4.41}{\left(\frac{4.91}{3}\right)} = 2.74$$

Average Penetration .74 inches as
calculated by the Oklahoma DOT.

Core Sample Pictures Provided by the Oklahoma
Department of Transportation, 09/2014

DECK-SIL™ System 1700 Series

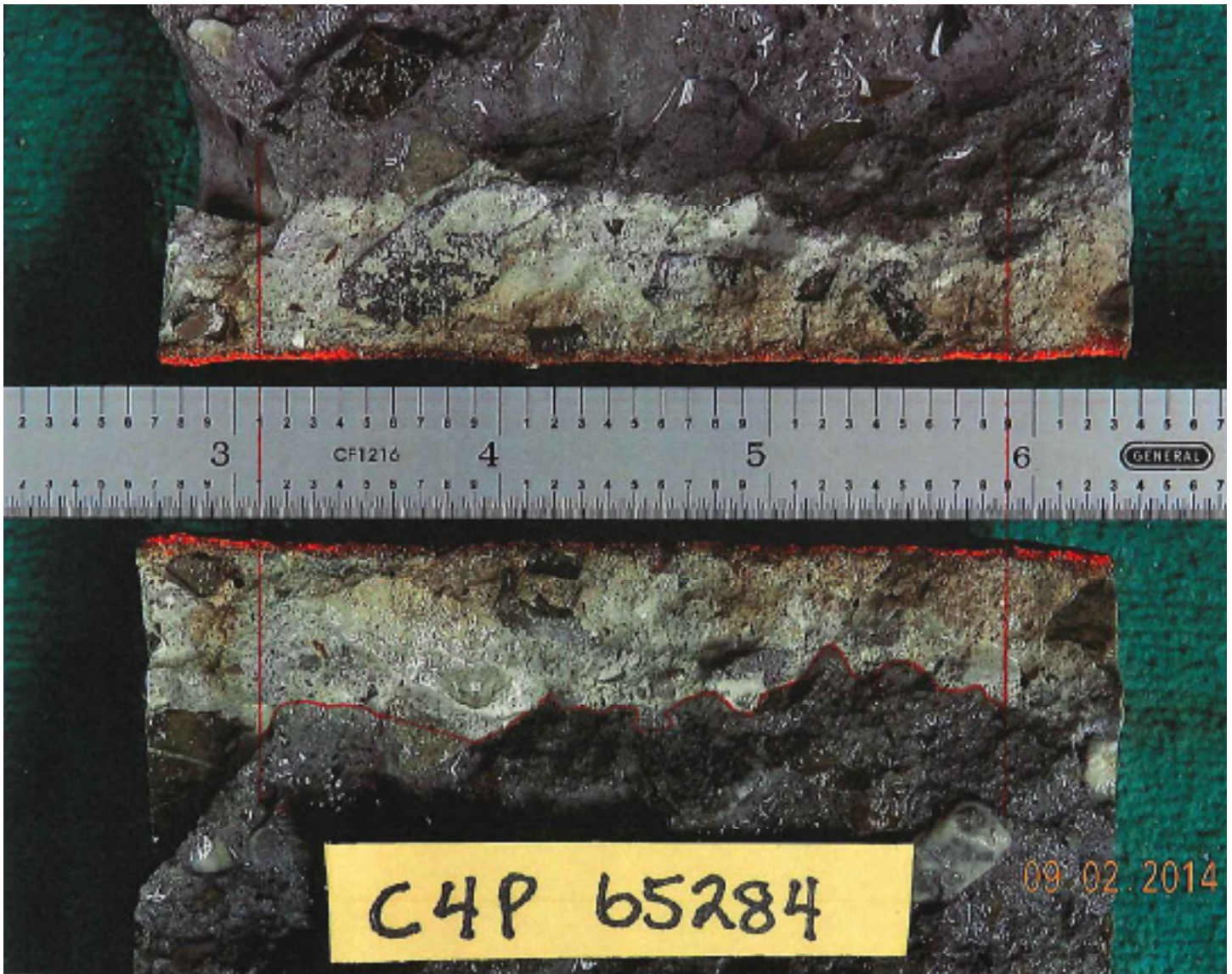


ADVANCED
CHEMICAL
TECHNOLOGIES, Inc.
"Protecting the World's Infrastructure"

Dual Layer Concrete Deck Sealing & Refurbishment

Patent Pending

Penetration Results for ACT's Deck-Sil™ 1700 Series



$$\frac{12.60}{3} = 4.20$$
$$4.58 \quad \left(\frac{4.91}{3}\right)$$

Average Penetration .56 inches as
calculated by the Oklahoma DOT.

Core Sample Pictures Provided by the Oklahoma
Department of Transportation, 09/2014

DECK-SIL™ System 1700 Series

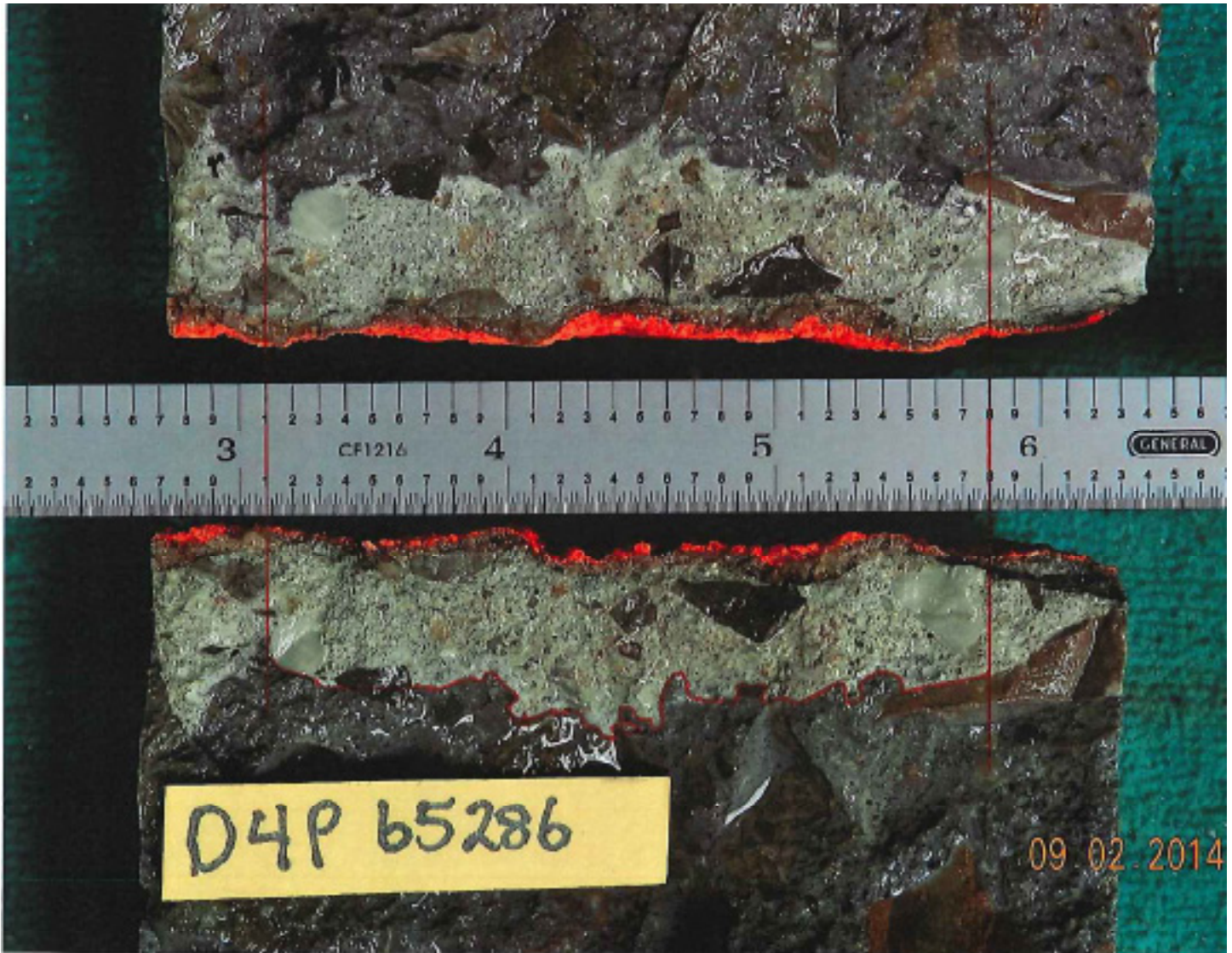


ADVANCED
CHEMICAL
TECHNOLOGIES, Inc.
"Protecting the World's Infrastructure"

Dual Layer Concrete Deck Sealing & Refurbishment

Patent Pending

Penetration Results for ACT's Deck-Sil™ 1700 Series



$$\frac{12.00}{3} = 4.00$$
$$\frac{4.41}{3} = 1.47$$
$$4.00 + 1.47 = 5.47$$
$$\frac{5.47}{3} = 1.82$$
$$1.82 \times 0.3 = 0.55$$

Average Penetration .55 inches as
calculated by the Oklahoma DOT.

Core Sample Pictures Provided by the Oklahoma
Department of Transportation, 09/2014

DECK-SIL™ System 1700 Series

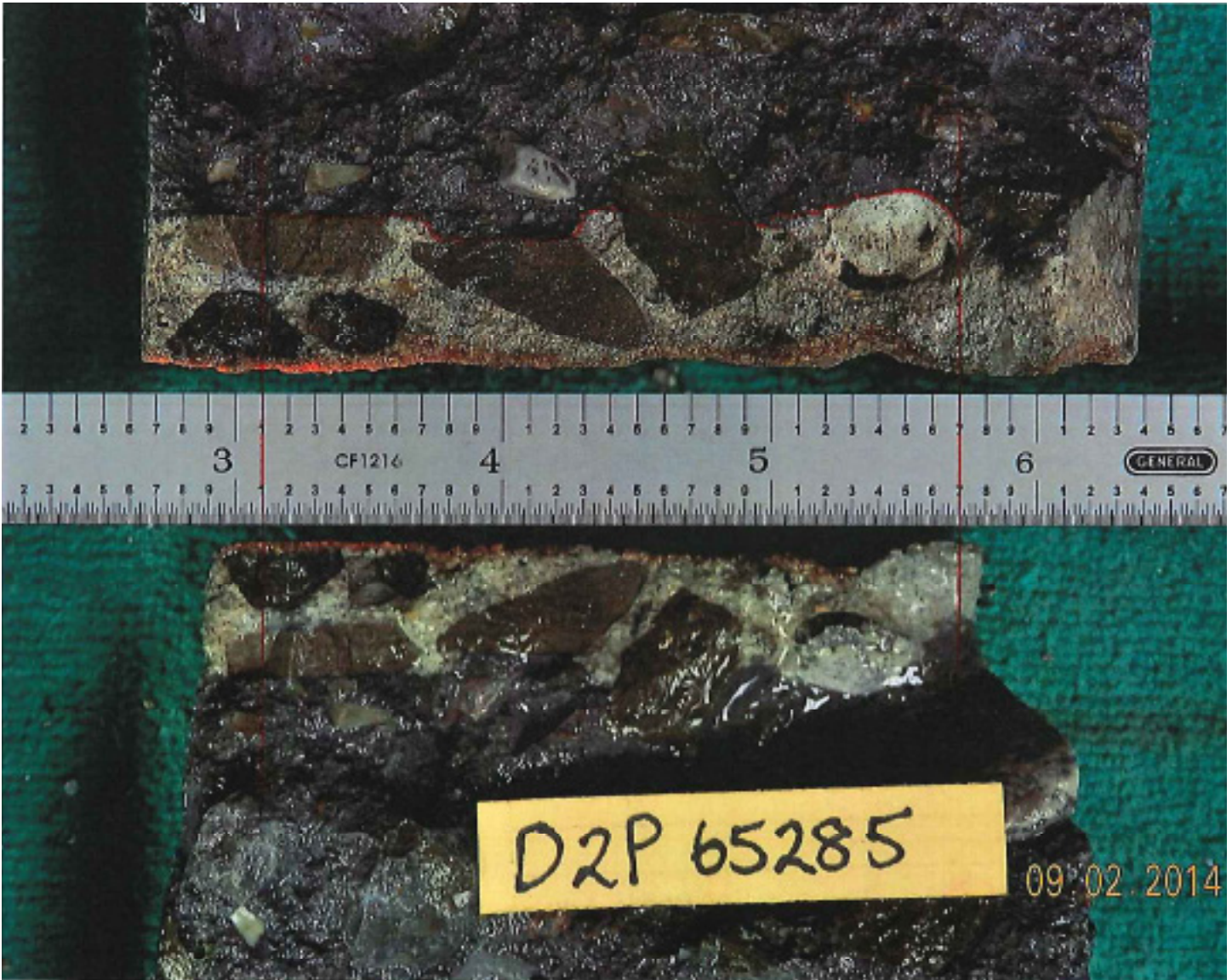


ADVANCED
CHEMICAL
TECHNOLOGIES, Inc.
"Protecting the World's Infrastructure"

Dual Layer Concrete Deck Sealing & Refurbishment

Patent Pending

Penetration Results for ACT's Deck-Sil™ 1700 Series



$$\frac{11.10}{3} = 0.53$$
$$4.26 \left(\frac{4.91}{3} \right)$$

Average Penetration .53 inches as
calculated by the Oklahoma DOT.

Core Sample Pictures Provided by the Oklahoma
Department of Transportation, 09/2014

DECK-SIL™ System 1700 Series

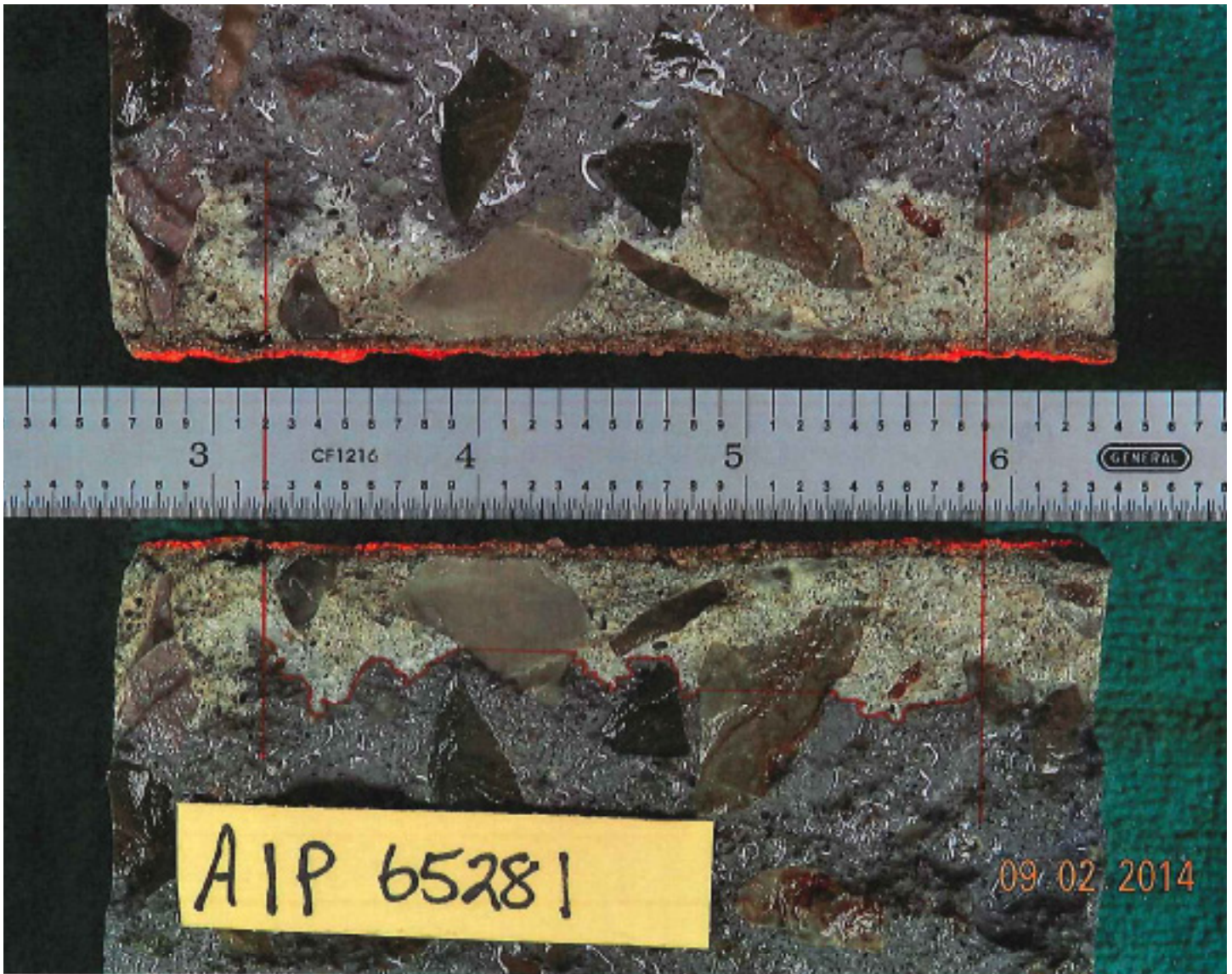


ADVANCED
CHEMICAL
TECHNOLOGIES, Inc.
"Protecting the World's Infrastructure"

Dual Layer Concrete Deck Sealing & Refurbishment

Patent Pending

Penetration Results for ACT's Deck-Sil™ 1700 Series



$$\frac{10.20}{3} = 0.47$$

4.41 (4.91)
3

Average Penetration .47 inches as
calculated by the Oklahoma DOT.

Core Sample Pictures Provided by the Oklahoma
Department of Transportation, 09/2014

DECK-SIL™ System 1700 Series

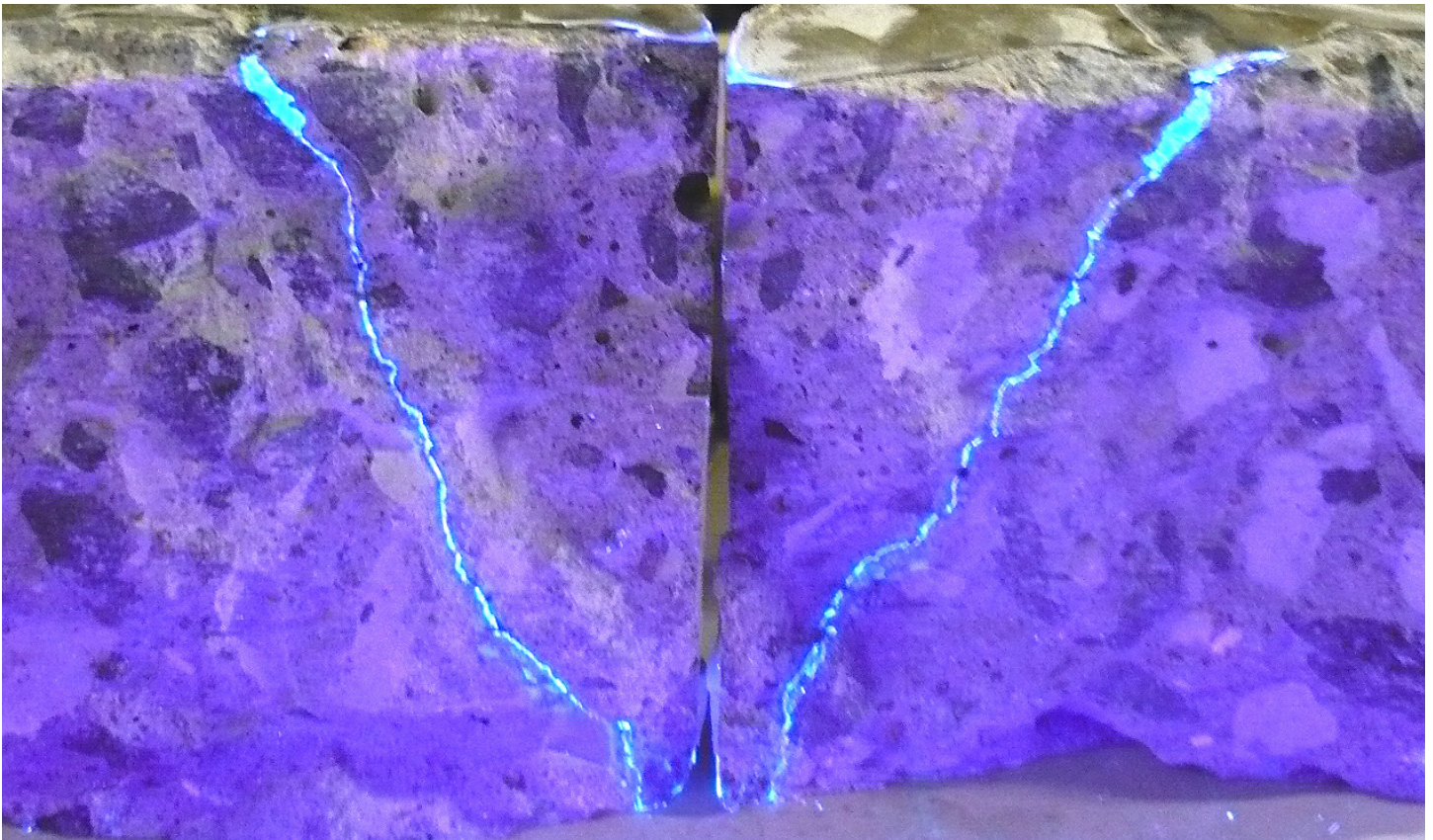


ADVANCED
CHEMICAL
TECHNOLOGIES, Inc.
"Protecting the World's Infrastructure"

Dual Layer Concrete Deck Sealing & Refurbishment

Patent Pending

Penetration Results for ACT's Deck-Sil™ 1700 Series



Mirror image of a split core sample shows
the deep penetration of Sil-Act Deck-Sil™
EP-1700 crack healing epoxy.